

Final Plat Riverwood Estates

A PART OF THE W/2 OF NE/4 OF SECTION 23, T-21-N, R-15-E
AN ADDITION TO ROGERS COUNTY, OKLAHOMA

SURVEYOR:
Benchmark Surveying &
Land Services, Inc.
P.O. Box 1078
Owasso, Oklahoma 74055
Phone: (918) 274-9081

OWNER/DEVELOPER:
Highfill Properties
P. O. Box 2595
Claremore, Oklahoma 74018
Phone: (918) 341-0999

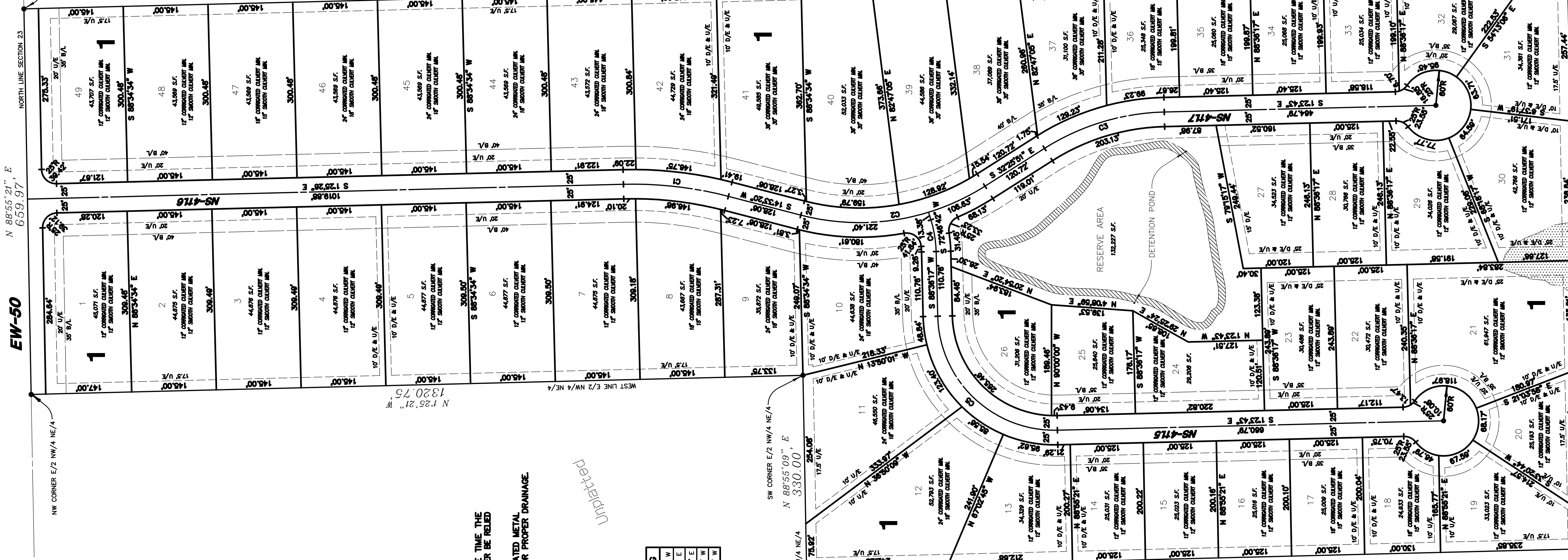
ENGINEER:
Kellogg Engineering, Inc.
6755 South 4060 Road
Tulala, Oklahoma 74080
Phone: (918) 275-4080

Scale: 1"=100'



ACCESS EASEMENT
ELECTRIC SERVICE LINE
BUILDING SERVICE LINE
DRAINAGE EASEMENT
FRANCE EASEMENT
F/E
LVA
LVA
R/W
R/W
UTILITY EASEMENT

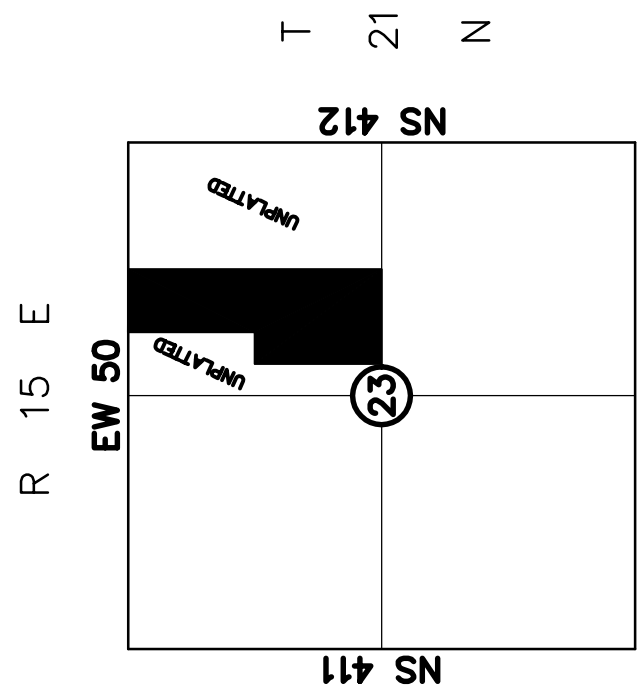
NE CORNER W/2 NE/4 NE/4
SECTION 23, T-21-N, R-15-E
POINT OF BEGINNING



EW-50

N 88°55'21" E
659.97'

1922.95'
S 88°55'21" W



Location Map

SCALE: 1"=2000'

SUBDIVISION CONTAINS:

49 LOTS IN 1 BLOCK

TOTAL AREA: 90.03 ACRES

ALL CORNERS MONUMENTED WITH 3/8" IRON PINS

BEARING BASE: STATE PLANE GRID BEARINGS

ADDRESSES SHOWN ON THIS PLAT ARE ACCURATE AS OF THE TIME THE PLAT WAS FILED. ADDRESSES ARE SUBJECT TO CHANGE AND SHOULD NEVER BE RELIED ON IN PLACE OF THE LEGAL DESCRIPTION.

THE CURVE NOTATIONS REPRESENT THE MINIMUM SIZE OF CORRUGATED METAL PIPES AND OR SMOOTH PVC OR SMOOTH STEEL PIPES REQUIRED FOR PROPER DRAINAGE.

Curve Information

CURVE #	LENGTH	DELTA	RADIUS	CHORD	BEARING
C1	181.28	15°58'45"	650.00'	180.69'	S 63°35'57" W
C2	328.03'	48°59'11"	400.00'	318.91'	S 8°56'16" E
C3	218.67'	31°02'08"	400.00'	214.03'	S 18°54'47" E
C4	55.24'	15°49'35"	200.00'	55.07'	S 80°41'29" W
C5	314.18'	80°00'00"	200.00'	282.84'	S 43°26'17" W